

# TECHNICAL CHARACTERISTICS

	MONO MINI	MONO MAXI	DUO MINI	DUO MAXI
Part number (Standard)	4400019823	4400019828 (15L) 4400019829 (20L) 4400019830 (25L) 4400019831 (30L)	4400019832	4400019833
Resin volume:	9 liters	15,20,25,30 liters	2 x 6 liters	2 x 20 liters
Type of resin	monodisperse	monodisperse	monodisperse	monodisperse
Inlet / outlet connections:	3/4"	3/4"	1"	1"
Drain:	1/2"	1/2"	1/2"	1/2"
Nominal flow*:	0,6 m <sup>3</sup> /h	1 m <sup>3</sup> /h (15L) 1,3 m <sup>3</sup> /h (20L) 1,6 m <sup>3</sup> /h (25L) 2 m <sup>3</sup> /h (30L)	0,4 m <sup>3</sup> /h	1,3 m <sup>3</sup> /h
Maximum flow*:	0,9 m <sup>3</sup> /h	1,5 m <sup>3</sup> /h (15L) 2 m <sup>3</sup> /h (20L) 2,5 m <sup>3</sup> /h (25L) 3 m <sup>3</sup> /h (30L)	0,6 m <sup>3</sup> /h	2 m <sup>3</sup> /h
Capacity**:	1,3 m <sup>3</sup>	2,1 m <sup>3</sup> (15L) 2,8 m <sup>3</sup> (20L) 3,6 m <sup>3</sup> (25L) 4,2 m <sup>3</sup> (30L)	2 x 0,85 m <sup>3</sup> continuous supply of softened water	2 x 2,8 m <sup>3</sup> continuous supply of softened water
Power supply:	24 V - 50 Hz	24 V - 50 Hz	24 V - 50 Hz	24 V - 50 Hz
Blending valve:	yes	yes	yes	yes
Regeneration:	co-current -	co-current -	counter current Packed bed	counter current Packed bed
Option:			chlorine generator	chlorine generator

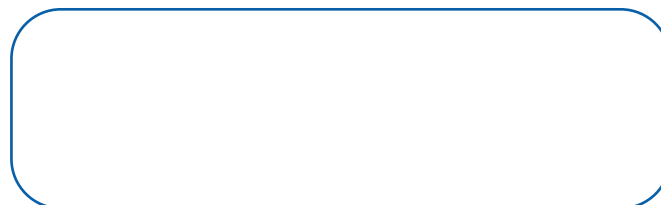
\* This flow is given as indication and can vary with water origin and temperature

\*\* Indicative capacity given at 350ppm CaCO<sub>3</sub> raw water hardness, 150g salt per liter of resin, 25°C

## STRONG POINTS OF THE PALLAS® FAMILY



- The choice between price competitive features (Pallas Mono) and high end model (Pallas Duo)
- The choice between a compact model (Pallas Mini) and a large capacity of softened water (Pallas Maxi)
- The option to have a disinfection during each regeneration (Pallas Duo with Chlorinator)
- The deliberate choice of a product compliant with all international laws.
- The association of an attractive design with perfect ergonomics. (Sliding salt lid)
- The association of resistant materials with a perfect finishing.

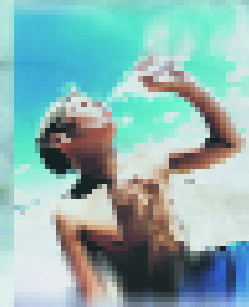
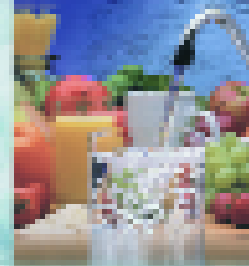


# PALLAS MONO / DUO

MAXI / MINI

Simplex/Duplex - Mini/Maxi: the choice is yours!

- attractive design
- proven reliability
- extended range



# PALLAS MONO

*mini or*

## WATER HARDNESS

Pallas is your ideal solution for the trouble caused by limescale: Limescale hardens and settles in your dishwasher, coffee maker, steam iron and other domestic appliances working with hot water.

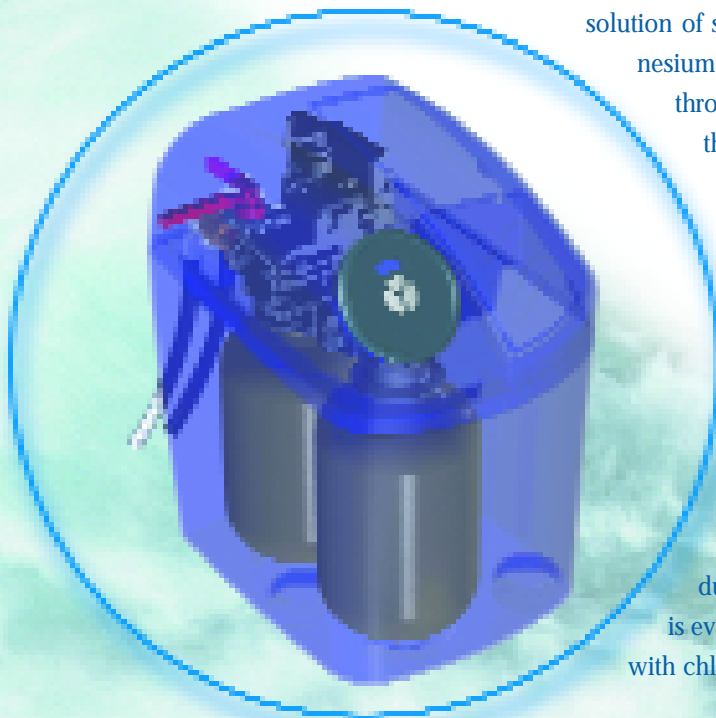


Besides, Pallas will protect the important and expensive appliances in your house such as central heating, boiler, etc...Where limescale can affect the efficient use of energy.

Moreover, by choosing the Pallas® you will save considerably on the use of soap and cleaning liquids necessary for washing clothes, crockery and sanitary ware.

## HOW DOES IT WORK ?

**Pallas Mono** contains an electronic demand valve which can be programmed to start the regeneration on a defined time when capacity softener is exhausted. During regeneration the valve takes up the saturated solution of sodium chloride to exchange the calcium and magnesium ions for sodium ions. These ions are then flushed through the drain port and rinsing continues until all of the sodium chloride excess is removed from the resin bed (no soft water is supplied during this period).



**Pallas Duo** works in a different way than the Pallas Mono. It uses a duplex valve and two vessels. That means it can deliver softened water all day long, 7 days a week. When one vessel is being regenerated, the valve automatically switches to the other vessel. It is a counter current regeneration and the soft water helps the regeneration to be much more efficient (quantity of produced soft water compared to salt and water usage). It is even possible to execute a soft disinfection of the resins with chlorine using chloride electrolysis (option).

# O - DUO

*maxi*

## ELECTRONIC CONTROLLER

Water meter gives on time information on water usage to the electronic controller. When system capacity is exhausted, controller starts regeneration.

Capacity at start up is linked to softener size (Pallas Mini or Maxi) and inlet mains water hardness.

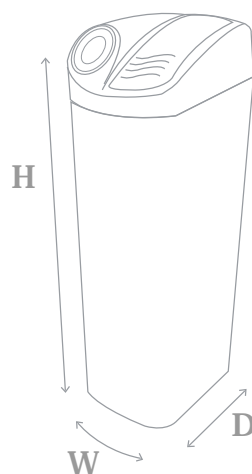
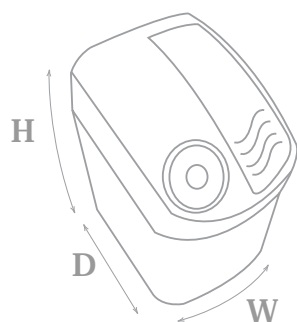
Display alternates between time of the day and remaining capacity.



## DESIGN AND DIMENSIONS

Pallas water softener can be located in small spaces eg. under the kitchen sink. This comes from an innovative design with optimized ergonomics and sliding salt lid.

Professional assembly combined with a robust packaging insure you to receive a "ready to install" device.



<b>PALLAS MINI</b>	H • Height:	54 cm
	W • Width:	35 cm
	D • Depth:	46 cm

<b>PALLAS MAXI</b>	H • Height:	118 cm
	W • Width:	35 cm
	D • Depth:	46 cm

