

TAILOR-MADE COMPOSITE PRESSURE VESSELS

WHAT'S SO SUPER ABOUT TAILOR-MADE VESSELS ?

CUSTOM DESIGN

- Manway
- Sight glasses
- Flange connections
- Distribution systems
- Mounting bracket
- Support frame/trolley
- Hand hole

FIBER REINFORCEMENT

- Lightweight
- Easy to handle



WIDE CHOICE OF INNER LINERS

- Choice of liners according to product (PE, PP, PVDF)
- Approved for drinking-water and food by the FDA
- No odours, no taste
- Chemical compatibility

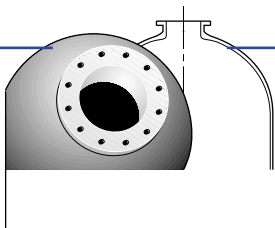
CLEAN VESSEL TECHNOLOGY

- No leakage
- No corrosion
- 100% contamination protection

RESISTANT COATING


- No corrosion, no paint
- Easy to maintain


CD_TM1_0900





TAILOR-MADE COMPOSITE PRESSURE VESSELS

HOW TO COMPOSE YOUR TAILOR-MADE VESSEL ?

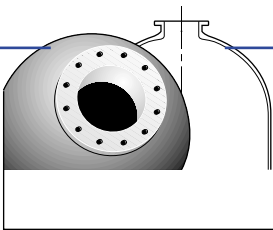
- 

Select the requested vessel dimension and volume.
- 

Select the requested top-, bottom- and sideholes.
- 

Select the requested accessoires.
- 

Communicate the selected data to Structural Europe to obtain a detailed quotation.



**TAILOR-MADE COMPOSITE
PRESSURE VESSELS**

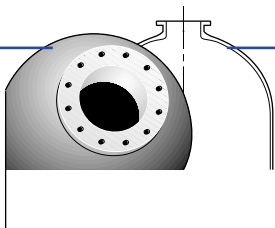


Select the requested vessel dimension and volume.

STANDARDIZED MODELS

DIAMETER (mm)	(mm)	Cylindrical height		CYLINDRICAL HEIGHT(mm) :																
		(mm)	(mm)	2500	2400	2300	2200	2100	2000	1900	1800	1700	1600	1500	1400	1300	1200	1100	1000	
14"	Ø369	1369	140	VOLUME VESSEL (l) :	251	241	231	221	212	202	192	182	172	163	153	143	133	123	114	104
16"	Ø406	1356	172	VOLUME VESSEL (l) :	308	296	284	272	260	249	237	225	213	201	189	177	165	153	142	130
18"	Ø496	1344	250	VOLUME VESSEL (l) :	438	422	405	389	373	357	340	324	308	292	275	259	243	227	210	194
21"	Ø552	1158	310	VOLUME VESSEL (l) :	612	589	567	544	522	499	477	454	432	409	387	364	342	319	297	274
24"	Ø618	1320	450	VOLUME VESSEL (l) :	776	748	721	693	665	638	610	583	555	527	500	472	444	417	389	362
30"	Ø770	1284	710	VOLUME VESSEL (l) :	1243	1199	1155	1111	1068	1024	980	936	892	848	805	761	717	673	629	586
36"	Ø927	1272	1020	VOLUME VESSEL (l) :	1806	1742	1678	1614	1550	1486	1422	1358	1294	1230	1166	1102	1038	974	910	846
42"	Ø1074	1200	1360	VOLUME VESSEL (l) :	2398	2317	2236	2154	2073	1992	1911	1830	1748	1667	1586	1505	1423	1342	1261	1180
48"	Ø1226	1075	1840	VOLUME VESSEL (l) :	3365	3253	3141	3029	2917	2805	2692	2580	2468	2356	2244	2132	2019	1907	1795	1683
55"	Ø1429	1106	2619	VOLUME VESSEL (l) :	4748	4595	4443	4290	4137	3984	3831	3678	3525	3373	3220	3067	2914	2761	2619	2456
		1500	3220																	
		1750	3602																	
		2000	3984																	
63"	Ø1623	1500	4265	VOLUME VESSEL (l) :	6248	6049	5851	5652	5454	5255	5056	4858	4659	4461	4262	4064	3865	3667	3468	3269
		1750	4760																	
		2000	5255																	

Minimum cylindrical height : 500mm
Other cylindrical heights than those listed in the above table are also available.



TAILOR-MADE COMPOSITE PRESSURE VESSELS

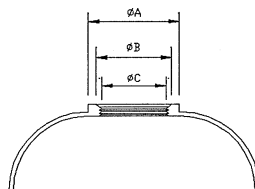
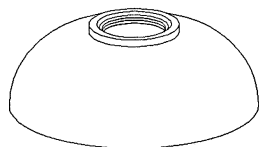
2

Select the requested top-, bottom- and sideholes.

TOP-, BOTTOM- and SIDEHOLE CONNECTIONS

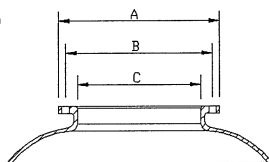
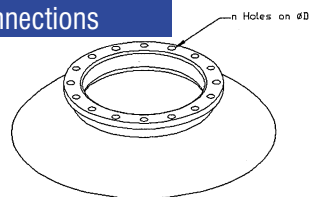
Top- and bottom threaded connections

4" - 8UN



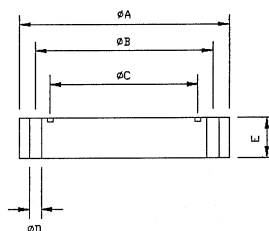
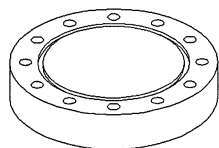
Top- and bottom flanged connections

6", DN200*, DN400

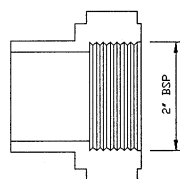
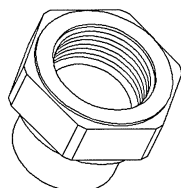


Top- and bottom blindflanges

PP/FRP : DN50, DN80,
DN100, DN400
PVC : DN200



Dome- and sidehole threaded connections

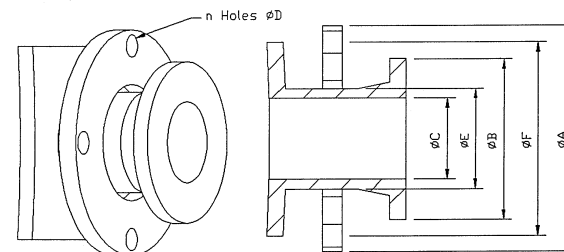


Dome- and sidehole flanged connections

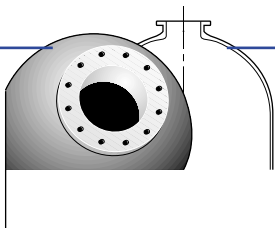
DN 50, DN 80, DN 100
Side hole for 30" -> 63": DN 150 - DN 200

DIAMETER	ϕA	ϕB	ϕC	n x ϕD	E	ϕF	ϕG	ϕH
4"	127	105,7	4"-8UN	-	-	-	-	-
6"	250	215,9	165	12 x 8,5	45	187,4	-	-
DN50	165	125	51,4	4 x 18	18	-	102	63
DN80	200	160	73,6	8 x 18	20	-	138	90
DN100	220	180	90	8 x 18	22	-	158	110
DN200	340	295	164,6	8 x 22	30	-	268	200
DN200*	340	295	197	8 x 22	30	-	-	-
DN400	565	315	432	16 x 27	50	-	-	-

*Dimensions only for top- and bottom openings



Pressure : 10 bar
Material backing ring : PP / GRP



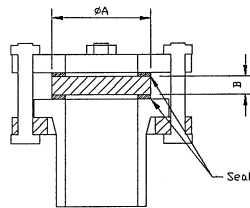
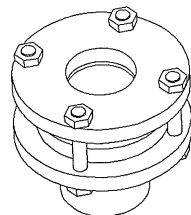
TAILOR-MADE COMPOSITE PRESSURE VESSELS

3

Select the requested accessories

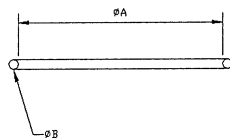
Sightglasses

DN80 : ϕA 140mm, ϕB 18/20 mm
 DN100 : ϕA 160mm, ϕB 18/20 mm
 Always mounted between 2 seals

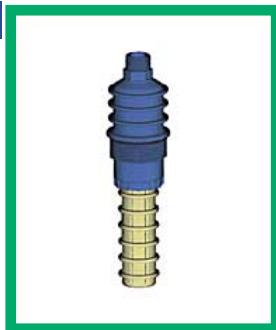


Seals

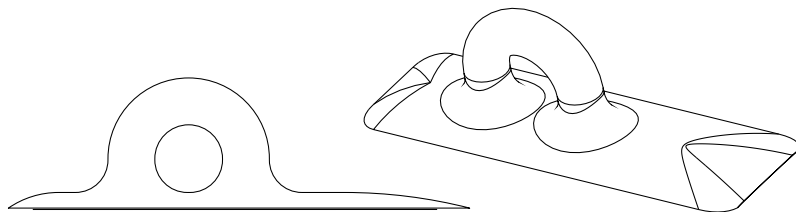
6" O-ring for 6" blindflanges : ϕA 180mm, ϕB 7 mm
 Other seals are standard flat seals



Aeration valve



Lifting lugs

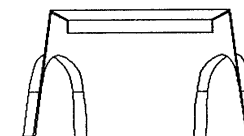
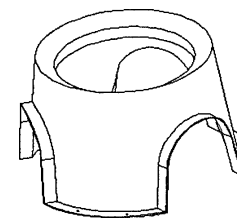


Bolts & nuts

All the bolts Structural uses are stainless steel A2.
 All the nuts, washers and v-washers are stainless steel A4.

Bases

Tripod :



Ring :

