

Diaphragm Valve, Metal

Construction

The GEMÜ 653 / 654 manually operated 2/2-way metal diaphragm valve has a stainless steel bonnet and is available in two versions - GEMÜ 653 has a handwheel in high temperature and chemically resistant plastic, GEMÜ 654 a stainless steel handwheel. The handwheel is non-rising and has a standard optical position indicator. Two bonnet versions are available: for 2/2-way bodies and for T-bodies or multi-port bodies.

Features

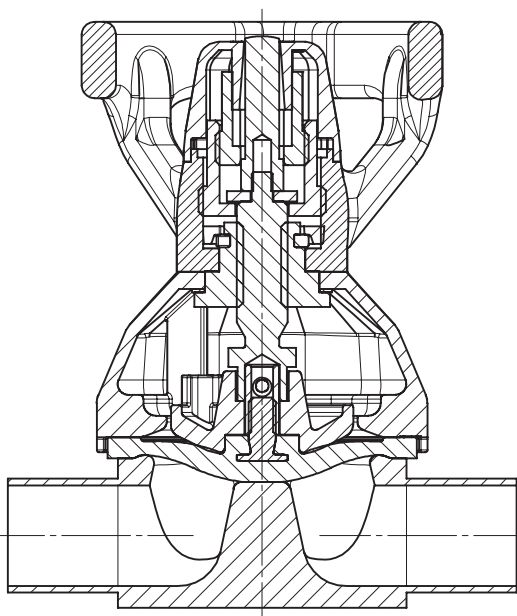
- Suitable for inert, corrosive*, liquid and gaseous media
- CIP/SIP cleaning and sterilizing capabilities
- Autoclave capability
- Insensitive to particulate media
- Surface finishes down to 0.25 µm, electropolished
- Designed according to GMP (Good Manufacturing Practice)

Advantages

- The handwheel design allows minimal heat sink thus reducing the danger of burns injuries
- The service life of the diaphragm is increased to a maximum by the patented optional seal adjuster (US-patent 6,691,737 B2)
- Optional flow direction, will seal in either flow direction up to full operating pressure
- Optional mounting position
- Option
 - Lockable handwheel
 - Mounting for proximity switches for position feedback

*see information on working medium on page 2

Sectional drawing



GEMÜ 653



GEMÜ 654

Technical data

Working medium

Corrosive, inert, gaseous and liquid media which have no negative impact on the physical and chemical properties of the body and diaphragm material.

The valve will seal in both flow directions up to full operating pressure (All pressures are gauge pressures).

Bonnet material

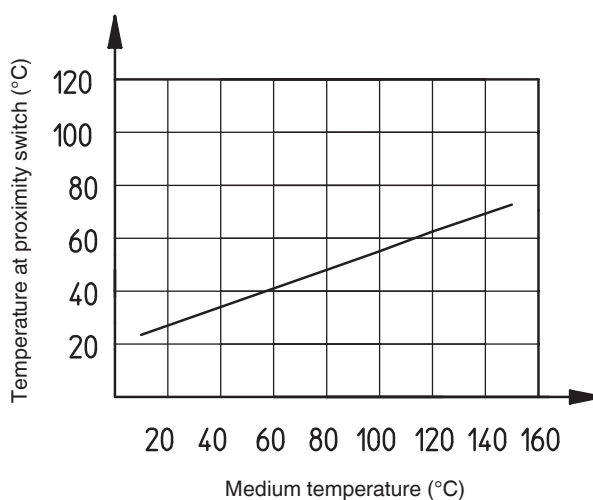
Bonnet	A4 stainless steel
Cap (DN 10 - DN 40)	PEEK
Cap (DN 50 - DN 100)	PES
653 handwheel	PPS glass filled
654 handwheel	A4 stainless steel

Ambient conditions

Max. ambient temperature	Standard	60° C
Max. ambient temperature	Accessory MAG	35° C

Temperature at mounting point for proximity switches see ambient temperature diagram below

Values measured at 25°C ambient temperature



Diaphragm size	Operating pressure [bar]	
	EPDM/FPM	PTFE
8	0 - 10	0 - 6
10	0 - 10	0 - 6
25	0 - 10	0 - 6
40	0 - 10	0 - 6
50	0 - 10	0 - 6
80	0 - 10	0 - 6
100	0 - 10	0 - 6

All pressures are gauge pressures. Operating pressure values were determined with static operating pressure applied on one side of a closed valve. Sealing at the valve seat and atmospheric sealing is ensured for the given values. Information on operating pressures applied on both sides and for high purity media on request.

Kv values [m³/h]

MG	DN	DIN Code 0	DIN 11850 Series 1 Code 16	DIN 11850 Series 2 Code 17	DIN 11850 Series 3 Code 18	SMS 3008 Code 37	ASME BPE Code 59	EN ISO 1127 Code 60
8	4	0.5	-	-	-	-	-	-
	6	1.1	-	-	-	-	-	1.2
	8	1.3	-	-	-	-	0.6	2.2
	10	-	2.1	2.1	2.1	-	1.3	-
	15	-	-	-	-	-	2.0	-
10	10	-	2.4	2.4	2.4	-	2.2	3.3
	15	3.3	3.8	3.8	3.8	-	2.2	4.0
	20	-	-	-	-	-	3.8	-
25	15	4.1	4.7	4.7	4.7	-	-	7.4
	20	6.3	7.0	7.0	7.0	-	4.4	13.2
	25	13.9	15.0	15.0	15.0	12.6	12.2	16.2
40	32	25.3	27.0	27.0	27.0	26.2	-	30.0
	40	29.3	30.9	30.9	30.9	30.2	29.5	32.8
50	50	46.5	48.4	48.4	48.4	51.7	50.6	55.2
	65	-	-	77.0	-	68.5	68.5	96.0
80	80	-	-	111.0	-	80.0	87.0	111.0
	100	-	-	194.0	-	173.0	188.0	214.0

Kv values determined acc. to IEC 534 standard, inlet pressure 6 bar, Δ p 1 bar, stainless steel valve body and soft elastomer diaphragm.

GEMÜ 654 - 0TN (MG 8)



GEMÜ 654 - 0TH (MG 8)



GEMÜ 653 - T (MG 10 - 100)



GEMÜ 654 - T (MG 10 - 100)



GEMÜ 653 - D (MG 10 - 50)



GEMÜ 654 - D (MG 10 - 50)



GEMÜ 653 - LOC



GEMÜ 654 - MAG



GEMÜ 653 - proximity switches



Order data

Body configuration	Code
Tank valve body	B**
2/2-way body	D
Multi-port design	M**
T body	T*
* For dimensions see T Valves brochure	
** Dimensions and versions on request or according to customer requirements	

Connection	Code
Butt weld spigots	
Spigots DIN	0
Spigots DIN 11850, series 1	16
Spigots DIN 11850, series 2	17
Spigots DIN 11850, series 3	18
Spigots DIN 11866, series A	1A
Spigots JIS-G 3447	35
Spigots JIS-G 3459	36
Spigots SMS 3008	37
Spigots BS 4825, part 1	55
Spigots ASME BPE	59
Spigots EN ISO 1127	60
Threaded connections	
Threaded spigots DIN 11851	6
One side threaded spigot, other side cone spigot and union nut, DIN 11851	62
Aseptic unions on request	
Flanges	
Flanges EN 1092 / PN16 / form B, length EN 558, series 1, ISO 5752, basic series 1	8
Flanges ANSI class 125/150 RF, length MSS SP-88	38
Flanges ANSI class 125/150 RF, length EN 558, series 1, ISO 5752, basic series 1	39
Clamp connections	
Clamps ASME BPE for pipe ASME BPE, short design	80
Clamps following ASME BPE for pipe EN ISO 1127, length EN 558, series 7	82
Clamps ASME BPE for pipe ASME BPE, length EN 558, series 7	88
Clamps DIN 32676 for pipe DIN 11850, length EN 558, series 7	8A
Clamps SMS 3017 for pipe SMS 3008, length EN 558, series 7	8E
Aseptic clamps on request	
For overview of available valve bodies for GEMÜ 653/654 see page 12	

Valve body material	Code
1.4435 - BN2 (CF3M), investment casting Fe<0.5%	32
1.4435 (ASTM A 351 CF3M \triangle 316L), investment casting	34
1.4408, PFA lined	39
1.4435 (316L), forged body	40
1.4435 (BN2), forged body Fe<0.5%	42
1.4435 (316L), Block material	41*
1.4435 (BN2), Block material Fe<0,5%	43*
* only for body configuration B, M and T	

Diaphragm material	Code
FPM	4 4A**
EPDM	max. 130°C* 12
EPDM	max. 150°C* 13 3A**
EPDM	max. 150°C* 16 6A**
EPDM	max. 150°C* 17
PTFE/EPDM convex PTFE loose	max. 150°C* 5E
PTFE/FPM convex PTFE loose	max. 150°C* 5F
PTFE/EPDM PTFE laminated	52 5A**
* Steam sterilization temperature / 20 min	
** for diaphragm size 8	
Material complies with FDA requirements, except code 4 and 5F	

Control function	Code
Manually operated	0

Bonnet size	Code
Diaphragm size 8	0
Diaphragm size 10	1
Diaphragm size 25	2
Diaphragm size 40	3
Diaphragm size 50	4
Diaphragm size 80	5
Diaphragm size 100	6

Bonnet version	Code
Bonnet with enclosed threads only for body configuration D (diaphragm size 10 - 50)	D
Bonnet with bolt holes for all body configurations (diaphragm size 8 - 100)	T
Bonnet for special function (only with bolt holes for all body configurations)	X

Order data

Bonnet function	Code
With seal adjuster and stroke limiter (diaphragm size 8 - 50)	H
Without seal adjuster and without stroke limiter	N
With seal adjuster (diaphragm size 80 - 100)	S
With seal adjuster, stroke limiter and mounting for proximity switches M 8x1 (diaphragm size 10 - 50)	A*
With seal adjuster and mounting for proximity switches M 12x1 (diaphragm size 80 - 100)	B*
With seal adjuster, stroke limiter, locking device (both directions) and mounting for proximity switches M 8x1 (diaphragm size 10 - 50)	E*
With seal adjuster, locking device (both directions) and mounting for proximity switches M 12x1 (diaphragm size 80 - 100)	F*
With seal adjuster, stroke limiter and safety gland packing (diaphragm size 10 - 50)	K*
With seal adjuster and safety gland packing (diaphragm size 80 - 100)	
With seal adjuster, stroke limiter, locking device to prevent closing and mounting for proximity switches M 8x1 (diaphragm size 10 - 50)	
With seal adjuster, locking device to prevent closing and mounting for proximity switches M 12x1 (diaphragm size 80 - 100)	
With seal adjuster, stroke limiter, locking device to prevent opening and mounting for proximity switches M 8x1 (diaphragm size 10 - 50)	
With seal adjuster, locking device to prevent opening and mounting for proximity switches M 12x1 (diaphragm size 80 - 100)	

* only in connection with bonnet version X

Valve body surface finish, internal contour		Code
Ra ≤ 6.3 µm	blasted internal/external	1500*
Ra ≤ 6.3 µm	electropolished internal/external	1509*
Ra ≤ 0.8 µm	mechanically polished internal, blasted external	1502
Ra ≤ 0.8 µm	electropolished internal/external	1503
Ra ≤ 0.6 µm	mechanically polished internal, blasted external	1507
Ra ≤ 0.6 µm	electropolished internal/external	1508
Ra ≤ 0.4 µm	mechanically polished internal, blasted external	1536
Ra ≤ 0.4 µm	electropolished internal/external	1537
Ra ≤ 0.25 µm	mechanically polished internal, blasted external	1527
Ra ≤ 0.25 µm	electropolished internal/external	1516

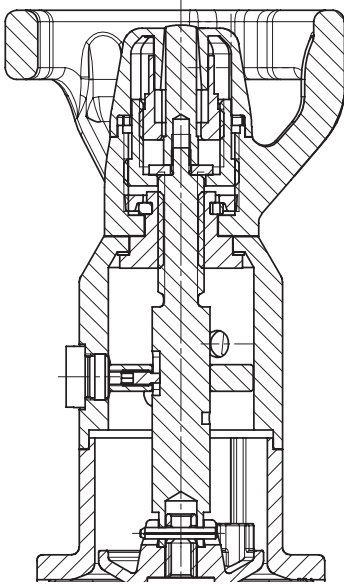
Ra acc. to DIN 4768; at defined reference points * only investment cast design

Order example	653	50	D	60	34	13	0	4	D	H	1503
Type	653										
Nominal size		50									
Body configuration (code)			D								
Connection (code)				60							
Valve body material (code)					34						
Diaphragm material (code)						13					
Control function (code)							0				
Bonnet size (code)								4			
Bonnet version (code)									D		
Bonnet function (code)										H	
Nominal size (mm)*											
Connection (code)*											
Surface finish (code)											1503

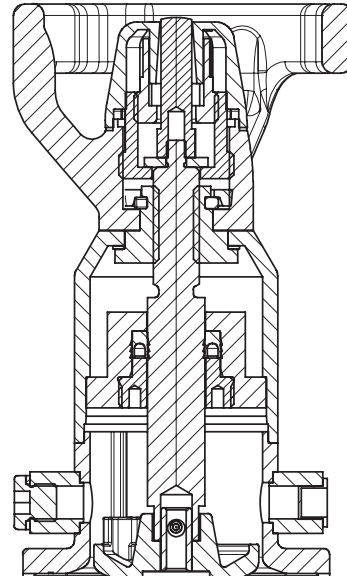
* only in T-valve version

Special versions

Additional function A
with seal adjuster, stroke limiter
and mounting for proximity switches M 8x1

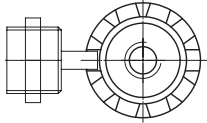
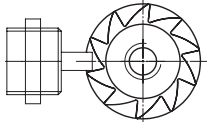
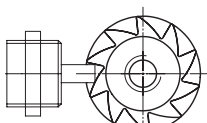


Additional function E
with seal adjuster, stroke limiter
and safety gland packing



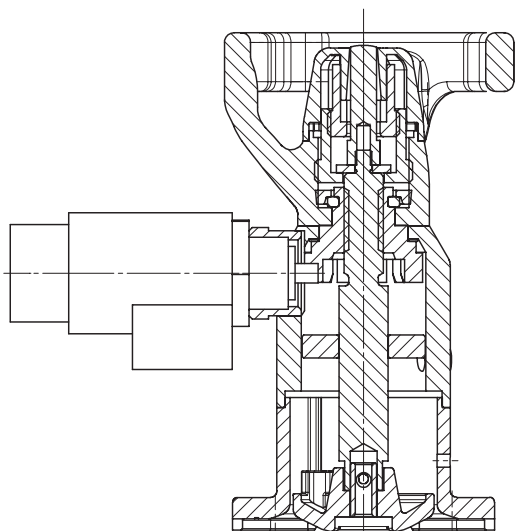
Additional function B, K, F

Types of locking devices

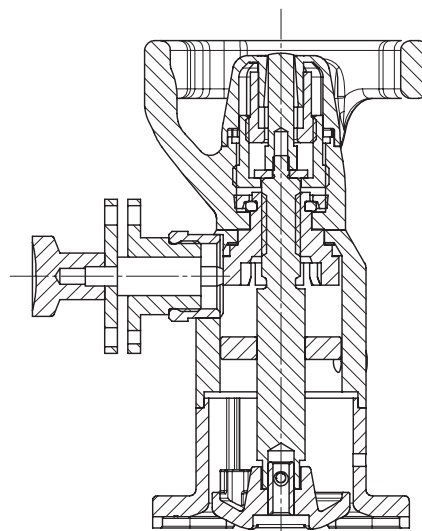
<p style="text-align: center;">B</p> 	<p>B Mounting of locking device (both directions), proximity switch possible</p>
<p style="text-align: center;">K</p> 	<p>K Mounting of locking device to prevent opening, proximity switch possible</p>
<p style="text-align: center;">F</p> 	<p>F Mounting of locking device to prevent closing, proximity switch possible</p>

Type of accessory

MAG - Electrical locking device



LOC - Mechanical locking device



The solenoids, padlocks etc. for the "locking device" must be ordered separately as accessories.
Available only in connection with the bonnet additional functions B, K, F!

Order example	653	MAG	Z	1	C1	M22
Type	653					
Type of accessory		MAG				
Accessory			Z			
Control function (code)				1		
Voltage/Frequency (code)					C1	
Thread type						M22

Type of accessory	MAG	-	Electrical locking device
Control function	1	-	Normally closed (locking pin extended)
Voltage/Frequency	C1	-	24 V DC

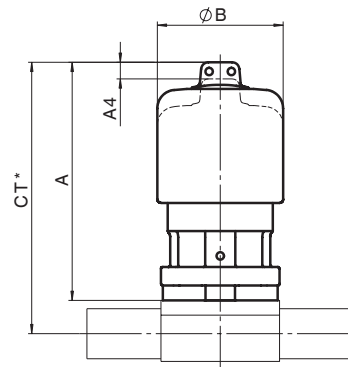
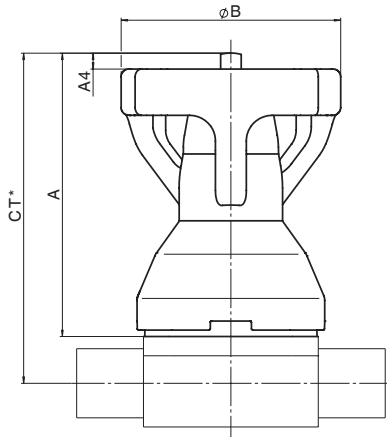
Type of accessory	LOC	-	Mechanical locking device
Control function	B	-	without padlock
	L	-	with padlock

EDP No.	Designation	Description
88264576	653MAGZ1C1M22AT	Electromagnetic locking device 24 V DC, normally closed, M22x1 ATEX
88232776	653MAGZ1C1M22	Electromagnetic locking device 24 V DC, normally closed, M22x1 IP 54, connector socket design A DIN EN 175301-803
88279388	653MAGZ2C1M22	Electromagnetic locking device 24 V DC, normally open, M22x1 IP 54, connector socket design A DIN EN 175301-803
88239348	653LOCZL M22	Locking device M22x1 with padlock
88239405	653LOCZB M22	Locking device M22x1 without padlock

Bonnet dimensions [mm]

MG	øB	A			A4		
		H	N	S	H	N	S
8	36	85	65	-	4.5	-	-
10	63		86	-	2.0	-	-
25	92		108	-	5.0	-	-
40	114		145	-	9.0	-	-
50	132		171	-	21.0	-	-
80	211	-	202	231	-	18.0	33
100	211	-	223	255	-	28.0	43

MG = diaphragm size



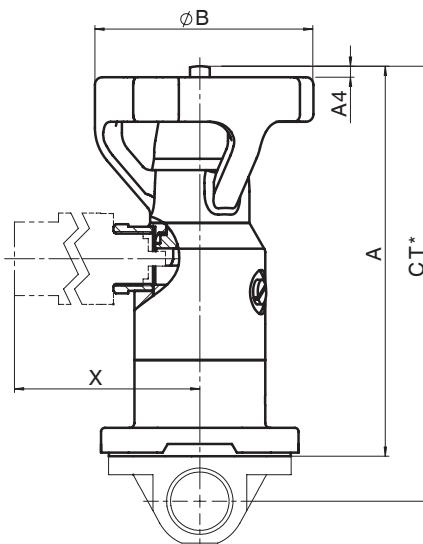
* CT = A + H1 (see body dimensions)

Dimensions: Special versions - Additional functions A, B, E, F, K, [mm]

MG	DN	øB	A	X MAG	X LOC	A4
10	10	63	124	107	73	2
25	15 - 25	92	159	112	78	5
40	32 - 40	114	192	119	85	9
50	50	132	233	125	91	21
80	65 - 80	211	290	142	108	33
100	100	211	323	152	118	43

h projection of indicator spindle over highest point when bonnet is in the fully open position
X only with additional functions B, F, K

MG = diaphragm size



* CT = A + H1 (see body dimensions)

Body dimensions [mm]

Butt weld spigots, connection code 0, 16, 17, 18, 1A, 35, 36, 37, 55, 59, 60
Valve body material: investment casting (code 34), forged body (code 40)

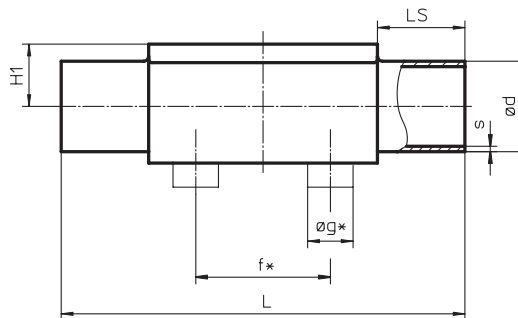
MG	DN	NPS	f*	g*	L	LS	H1*	H1**	DIN Series 0 Code 0		DIN 11850 Series 1 Code 16		DIN 11850 Series 2 Code 17		DIN 11850 Series 3 Code 18		DIN 11866 Series A Code 1A		JIS-G 3447 Code 35		JIS-G 3459 Code 36		SMS 3008 Code 37		BS 4825 Code 55		ASME BPE Code 59		EN ISO 1127 Code 60	
									ød	s	ød	s	ød	s	ød	s	ød	s	ød	s	ød	s	ød	s	ød	s	ød	s	ød	s
8	4	-	-	-	72	20	8.5	6	1.0	-	-	-	-	-	-	-	-	-	-	-	-	-	-	-	-	-	-	-	-	-
	6	-	-	-	72	20	8.5	8	1.0	-	-	-	-	-	-	8	1.0	-	-	10.5	1.20	-	-	-	-	-	-	-	10.2	1.6
	8	1/4"	-	-	72	20	8.5	10	1.0	-	-	-	-	-	-	10	1.0	-	-	13.8	1.65	-	-	6.35	1.2	6.35	0.89	13.5	1.6	
	10	3/8"	-	-	72	20	8.5	-	-	12	1.0	13	1.5	14	2.0	13	1.5	-	-	-	-	-	-	9.53	1.2	9.53	0.89	-	-	
	15	1/2"	-	-	72	20	8.5	-	-	-	-	-	-	-	-	-	-	-	-	-	-	-	-	12.70	1.2	12.70	1.65	-	-	
10	10	3/8"	30	13.5	108	25	12.5	-	-	12	1.0	13	1.5	14	2.0	13	1.5	-	-	17.3	1.65	-	-	9.53	1.2	9.53	0.89	17.2	1.6	
	15	1/2"	30	13.5	108	25	12.5	18	1.5	18	1.0	19	1.5	20	2.0	19	1.5	-	-	21.7	2.10	-	-	12.70	1.2	12.70	1.65	21.3	1.6	
	20	3/4"	30	13.5	108	25	12.5	-	-	-	-	-	-	-	-	-	-	-	-	-	-	-	19.05	1.2	19.05	1.65	-	-		
25	15	1/2"	40	13.5	120	25	13.0	19.0	18	1.5	18	1.0	19	1.5	20	2.0	19	1.5	-	-	21.7	2.10	-	-	-	-	-	21.3	1.6	
	20	3/4"	40	13.5	120	25	16.0	19.0	22	1.5	22	1.0	23	1.5	24	2.0	23	1.5	-	-	27.2	2.10	-	-	19.05	1.2	19.05	1.65	26.9	1.6
	25	1"	40	13.5	120	25	19.0	19.0	28	1.5	28	1.0	29	1.5	30	2.0	29	1.5	25.4	1.2	34.0	2.80	25.0	1.2	-	-	25.40	1.65	33.7	2.0
40	32	1 1/4"	68	13.5	153	25	24.0	26.0	34	1.5	34	1.0	35	1.5	36	2.0	35	1.5	31.8	1.2	42.7	2.80	33.7	1.2	-	-	-	42.4	2.0	
	40	1 1/2"	75	13.5	153	25	26.0	26.0	40	1.5	40	1.0	41	1.5	42	2.0	41	1.5	38.1	1.2	48.6	2.80	38.0	1.2	-	-	38.10	1.65	48.3	2.0
50	50	2"	90	13.5	173	30	32.0	32.0	52	1.5	52	1.0	53	1.5	54	2.0	53	1.5	50.8	1.5	60.5	2.80	51.0	1.2	-	-	50.80	1.65	60.3	2.0
80	65	2 1/2"	-	-	216	30	-	62	-	-	-	-	70	2.0	-	-	70	2.0	63.5	2.0	76.3	3.0	63.5	1.6	-	-	63.50	1.65	76.1	2.0
	80	3"	-	-	254	30	-	62	-	-	-	-	85	2.0	-	-	85	2.0	76.3	2.0	89.1	3.0	76.1	1.6	-	-	76.20	1.65	88.9	2.3
100	100	4"	-	-	305	30	-	76	-	-	-	104	2.0	-	-	104	2.0	101.6	2.0	114.3	3.0	101.6	2.0	-	-	101.6	2.11	114.3	2.3	

* only for investment cast design

** only for forged design

MG = diaphragm size

For materials see overview on last page



Body dimensions [mm]

Flanges - DIN EN 1092-2, connection code 8 Valve body material: 1.4435 (code 34, 40), 1.4408 (code 39)

MG	DN	øD	øk	ød	Number of bolt holes	H1			L
						Material code 34	Material code 39	Material code 40	
25	15	95	65	14	4	13.0	18.0	19.0	130*
	20	105	75	14	4	16.0	20.5	19.0	150
	25	115	85	14	4	19.0	23.0	19.0	160
40	32	140	100	18	4	24.0	28.7	26.0	180
	40	150	110	18	4	26.0	33.0	26.0	200
50	50	165	125	18	4	32.0	39.0	32.0	230
80	65	185	145	18	4	-	51.0	62.0	290
	80	200	160	18	8	-	59.5	62.0	310
100	100	220	180	18	8	-	73.0	76.0	350

For materials see overview on last page

*Material code 34 L = 150 (no DIN length)

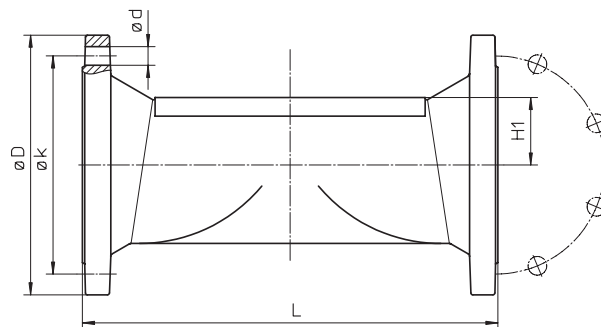
MG = diaphragm size

Flanges - ANSI B 16.5, connection code 38, 39 Valve body material: 1.4435 (code 34, 40), 1.4408 (code 39)

MG	DN	øD	øk	ød	No. of bolt holes	H1			L	
						Material code 34	Material code 39	Material code 40	Connection code 38	Connection code 39
25	15	88.9	60.5	15.7	4	13.0	18.0	19.0	-	130
	20	98.6	69.9	15.7	4	16.0	20.5	19.0	146	150
	25	108.0	79.2	15.7	4	19.0	23.0	19.0	146	160
40	32	117.3	88.9	15.7	4	24.0	28.7	26.0	-	180
	40	127.0	98.6	15.7	4	26.0	33.0	26.0	175	200
50	50	152.4	120.7	19.1	4	32.0	39.0	32.0	200	230
80	65	177.8	139.7	19.1	4	-	51.0	62.0	226	290
	80	190.5	152.4	19.1	4	-	59.5	62.0	260	310
100	100	228.6	190.5	19.1	8	-	73.0	76.0	327	350

For materials see overview on last page

MG = diaphragm size



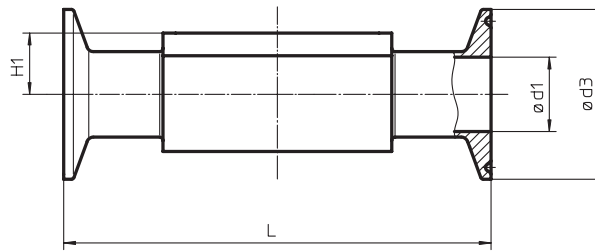
Body dimensions [mm]

Clamp connections, connection code 80, 82, 88, 8A, 8E Valve body material: forged body (code 40)

MG*	DN	NPS	H1	for pipe ASME BPE Code 80			for pipe EN ISO 1127 Code 82			for pipe ASME BPE Code 88			for pipe DIN 11850 Code 8A			for pipe SMS 3008 Code 8E		
				ød1	ød3	L	ød1	ød3	L	ød1	ød3	L	ød1	ød3	L	ød1	ød3	L
8	8	1/4"	8.5	4.57	25	63.5	10.30	25.4	63.5	-	-	-	-	-	-	-	-	-
	10	3/8"	8.5	7.75	25	63.5	-	-	-	-	-	-	10	34.0	88.9	-	-	-
	15	1/2"	8.5	9.40	25	63.5	-	-	-	9.40	25.0	108	-	-	-	-	-	-
10	10	3/8"	12.5	-	-	-	14.00	25.4	108.0	-	-	-	10	34.0	108.0	-	-	-
	15	1/2"	12.5	9.40	25.0	88.9	18.10	50.5	108.0	9.40	25.0	108	16	34.0	108.0	-	-	-
	20	3/4"	12.5	15.75	25.0	101.6	-	-	-	15.75	25.0	117	-	-	-	-	-	-
25	15	1/2"	19.0	-	-	-	18.10	50.5	108.0	-	-	-	16	34.0	108.0	-	-	-
	20	3/4"	19.0	15.75	25.0	101.6	23.70	50.5	117.0	15.75	25.0	117	20	34.0	117.0	-	-	-
	25	1"	19.0	22.10	50.5	114.3	29.70	50.5	127.0	22.10	50.5	127	26	50.5	127.0	22.60	50.5	127
40	32	1 1/4"	26.0	-	-	-	38.40	64.0	146.0	-	-	-	32	50.5	146.0	31.30	50.5	146
	40	1 1/2"	26.0	34.80	50.5	139.7	44.30	64.0	159.0	34.80	50.5	159	38	50.5	159.0	35.60	50.5	159
50	50	2"	32.0	47.50	64.0	158.8	56.30	77.5	190.0	47.50	64.0	190	50	64.0	190.0	48.60	64.0	190
80	65	2 1/2"	62	60.20	77.5	193.7	72.10	91.0	216.0	60.20	77.5	216	66.0	91.0	216.0	60.30	77.5	216
	80	3"	62	72.90	91.0	222.3	84.30	106.0	254.0	72.90	91.0	254	81.0	106.0	254.0	72.90	91.0	254
100	100	4"	76	97.38	119.0	292.1	109.70	144.5	305.0	97.38	119.0	305	100.0	119.0	305.0	97.60	119.0	305

For materials see overview on last page

* diaphragm size



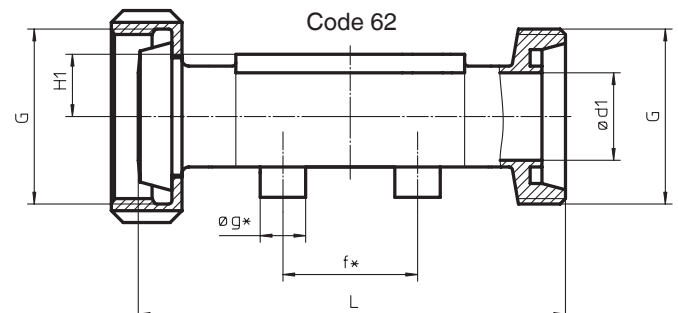
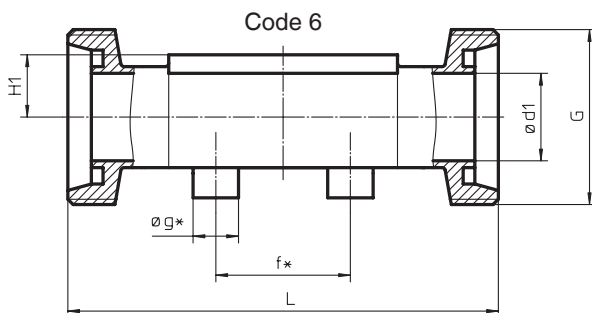
Threaded connections, connection code 6, 62 Valve body material: investment casting (code 34), forged body (code 40)

Diaphragm size	DN	H1*	H1**	f*	øg*	ød1*	G	L (code 6)	L (code 62)
8	10	8.5	-	-	-	10.0	RD 28 x 1/8	92	90
10	10	12.5	-	30.0	13.5	10.0	RD 28 x 1/8	118	116
	15	12.5	-	30.0	13.5	16.0	RD 34 x 1/8	118	116
25	15	13.0	19	40.0	13.5	16.0	RD 34 x 1/8	118	116
	20	16.0	19	40.0	13.5	20.0	RD 44 x 1/6	118	114
	25	19.0	19	40.0	13.5	26.0	RD 52 x 1/6	128	127
40	32	24.0	26	68.0	13.5	32.0	RD 58 x 1/6	147	147
	40	26.0	26	75.0	13.5	38.0	RD 65 x 1/6	160	160
50	50	32.0	32	90.0	13.5	50.0	RD 78 x 1/6	191	191
80	65	-	62	-	-	66.0	RD 95 x 1/6	246	246
	80	-	62	-	-	81.0	RD 110 x 1/4	256	256

For materials see overview on last page

* only for investment cast design

** only for forged design



Overview of valve bodies for GEMÜ 653/654

		Threaded connections				Spigots																				
Connection code		6		62		0		16		17		18		1A	35		36	37		55		59		60		
Material code		34	40	34	40	34	40	34	40	34	40	34	40	40	34	40	40	34	40	34	40	34	40	34	40	
MG	DN																									
8	4	-	-	-	-	X	X	-	-	-	-	-	-	-	-	-	-	-	-	-	-	-	-	-	-	
	6	-	-	-	-	X	X	-	-	-	-	-	-	X	-	-	X	-	-	-	-	-	-	-	X	X
	8	-	-	-	-	X	X	-	-	-	-	-	-	X	-	-	X	-	-	X	X	X	X	X	X	X
	10	W	W	W	W	-	-	X	X	X	X	X	X	X	-	-	X	-	-	X	X	X	X	-	-	-
	15	-	-	-	-	-	-	-	-	-	-	-	-	-	-	-	-	-	-	X	X	X	X	-	-	-
10	10	W	W	W	W	-	-	X	X	X	X	X	X	X	-	-	X	-	-	-	X	-	X	X	X	X
	15	W	W	W	W	X	X	X	X	X	X	X	X	X	-	-	X	-	-	X	X	-	X	X	X	X
	20	-	-	-	-	-	-	-	-	-	-	-	-	-	-	-	-	-	-	X	X	X	X	-	-	-
25	15	W	W	W	W	X	X	X	X	X	X	-	X	X	-	-	X	-	-	-	-	-	-	-	X	X
	20	W	W	W	W	X	X	X	X	X	X	-	X	X	-	-	X	-	-	X	X	X	X	X	X	X
	25	W	W	W	W	X	X	X	X	X	X	X	X	X	X	X	X	X	X	-	-	X	X	X	X	X
40	32	W	W	W	W	X	X	X	X	X	X	X	X	X	X	X	X	X	X	-	-	-	-	X	X	X
	40	W	W	W	W	X	X	X	X	X	X	X	X	X	X	X	X	X	X	-	-	X	X	X	X	X
50	50	W	W	W	W	X	X	X	X	X	X	X	X	X	X	X	X	X	X	-	-	X	X	X	X	X
80	65	-	W	-	W	-	-	-	-	-	X	-	-	X	-	X	X	-	X	-	-	-	X	-	X	X
	80	-	W	-	W	-	-	-	-	-	X	-	-	X	-	X	X	-	X	-	-	-	X	-	X	X
100	100	-	-	-	-	-	-	-	-	-	X*	-	-	X*	-	X*	X*	-	X*	-	-	-	X*	-	X*	

*Valve bodies are not suitable for use with diaphragm code 5E
X = Standard W = Welded construction

MG = diaphragm size

Overview of valve bodies for GEMÜ 653/654

		Clamps							Flanges						
Connection code		80		82		88	8A	8E	8			38	39		
Material code		40	41	40	41	40	40	40	34	39	40	39	34	39	40
MG	DN														
8	4	-	-	-	-	-	-	-	-	-	-	-	-	-	-
	6	-	-	-	-	-	-	-	-	-	-	-	-	-	-
	8	-	V	-	V	-	-	-	-	-	-	-	-	-	-
	10	-	V	-	-	-	W	-	-	-	-	-	-	-	-
	15	-	V	-	-	W	-	-	-	-	-	-	-	-	-
10	10	-	-	K	-	-	K	-	-	-	-	-	-	-	-
	15	K	-	W	-	K	K	-	-	-	-	-	-	-	-
	20	K	-	-	-	K	-	-	-	-	-	-	-	-	-
25	15	-	-	W	-	-	K	-	W	X	W	-	W	X	W
	20	K	-	K	-	K	K	-	W	X	W	X	W	X	W
	25	K	-	K	-	K	K	K	W	X	W	X	W	X	W
40	32	-	-	W	-	-	K	K	W	X	W	-	W	X	W
	40	K	-	W	-	K	K	K	W	X	W	X	W	X	W
50	50	K	-	W	-	K	K	K	W	X	W	X	W	X	W
80	65	K	-	K	-	K	K	K	-	-	W	-	-	-	W
	80	K	-	W	-	K	W	W	-	X	W	X	-	X	W
100	100	W*	-	W*	-	W	W*	W*	-	X*	W*	X*	-	X*	W*

*Valve bodies are not suitable for use with diaphragm code 5E
X = Standard K = Connections completely machined (not welded) in material code 40
V = Block material W = Welded construction

MG = diaphragm size

For further metal diaphragm valves, accessories and other products, please see our Product Range catalogue and Price List. Contact GEMÜ.



GEMÜ® VALVES, MEASUREMENT AND CONTROL SYSTEMS